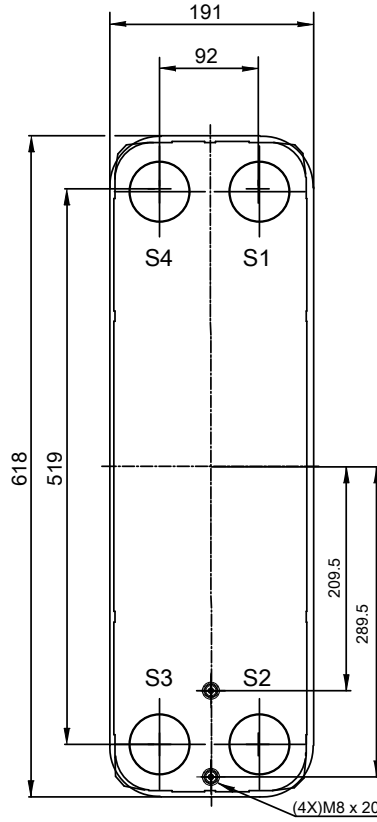
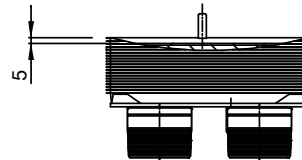
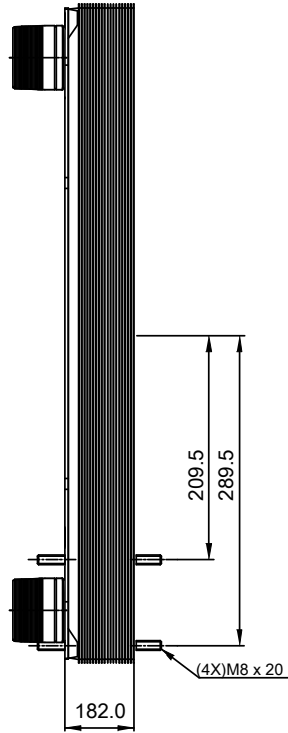
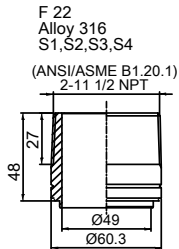


Note that all unique customer requirements (i.e tolerance) need to be verified thru Alfa Laval.



T1 T2 T3 T4 locations on back side correspond to S1 S2 S3 S4 on front side

HEATING SURFACE
 NETWEIGHT 35.8 kg
 OPERATING WEIGHT kg
 PLATE MATERIAL ALLOY 316
 PLATE GROUPING 1*29H/1*30H

ALL DIMENSIONS IN MILLIMETERS

| SIDE | MEDIA | INLET | TEMP. | OUTLET | TEMP. | FLOW RATE | PRESSURE DROP | LIQUID VOL. |
|------|-------|-------|-------|--------|-------|-----------|---------------|----------------------|
| 1 | | | | | | | | 7.5 dm ³ |
| 2 | | | | | | | | 7.25 dm ³ |

PRESSURE VESSEL APPROVAL

PED/CRN

AlfaNova 76-60H (3287000890)

www.alfalaval.com

CUSTOMER NAME / REF. NO.

TOTAL LENGTH 245.0 mm
 TOTAL WIDTH 191.0 mm
 TOTAL HEIGHT 618.0 mm

COMPANY / REF.



1/24/2023
 REV 0